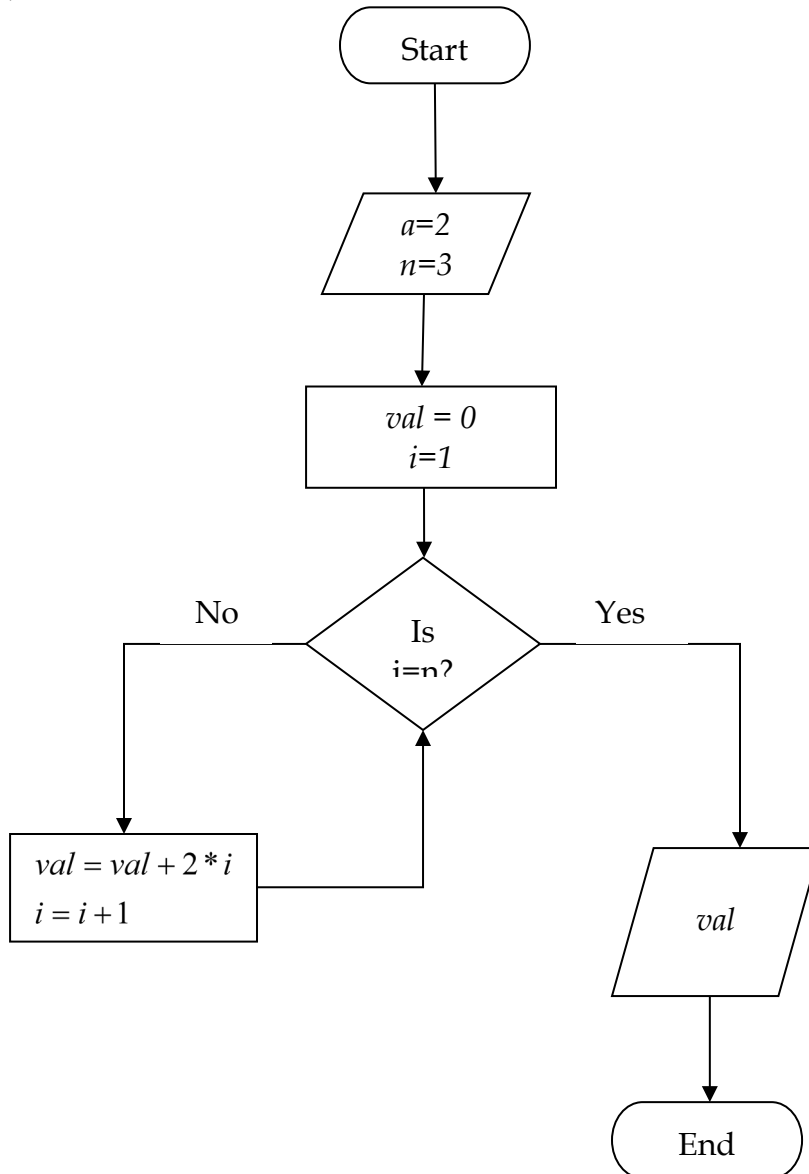


TOPIC

Computers – Section IV – Question 9

QUESTION



The value of the variable *val* at the end of the flowchart is

- (A) 2
- (B) 6
- (C) 12
- (D) 20

HINT

Follow the loop till the condition is met.

SOLUTION

Going down the flowchart, the initialization is as follows

a=2
n=3
val=0
i=1

Now the decision is to be made based on if $i=n$.

Is $i=n$ means is $1=3$? The answer is no to give us

$val=val+2*i = 0+2*1=2$
 $i=i+1=1+1=2$

Again going back to the decision, is $i=n$ means is $2=3$? The answer is no to give us

$val=val+2*i = 2+2*2=6$
 $i=i+1=2+1=3$

Again going back to the decision, is $i=n$ means is $3=3$? The answer is yes to take us to output val which is 6.

ANSWER

(B)

CONTRIBUTOR

Autar Kaw