

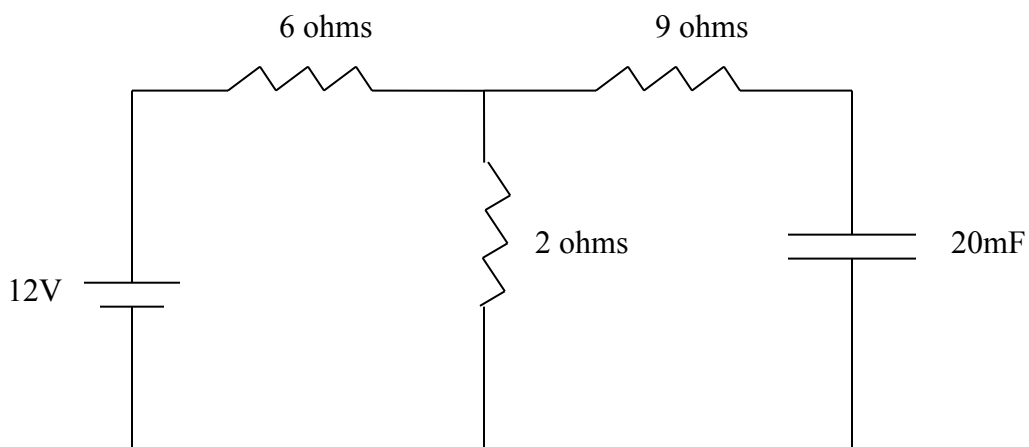
TOPIC

Electricity and Magnetism – Section XI – Question 1

QUESTION

Shown below is a circuit connected to a voltage source of 12V. At steady state, the voltage across the capacitor most nearly is

- (A) 3V
- (B) 12V
- (C) 1.5V
- (D) 11.57V

**HINT**

The circuit at steady state will behave as if the capacitor is an open circuit. This is because the capacitor has been charged and hence no more current can flow through it.

CONTRIBUTOR

Autar Kaw