

TOPIC

Electricity and Magnetism – Section XI – Question 3

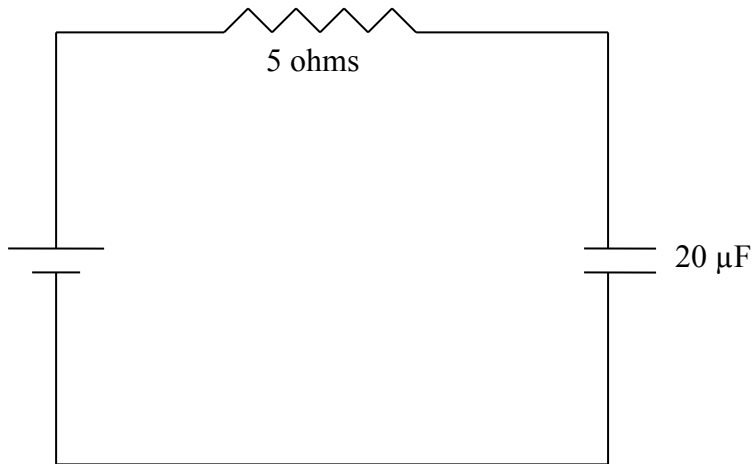
QUESTIONFor the circuit shown, the time constant τ in seconds is

(A) 1.0×10^{-4}

(B) 5.0×10^{-4}

(C) 4.0×10^{-6}

(D) 2.4×10^{-4}

**HINT**The time constant, τ is given by

$$\tau = RC$$

CONTRIBUTOR

Autar Kaw