

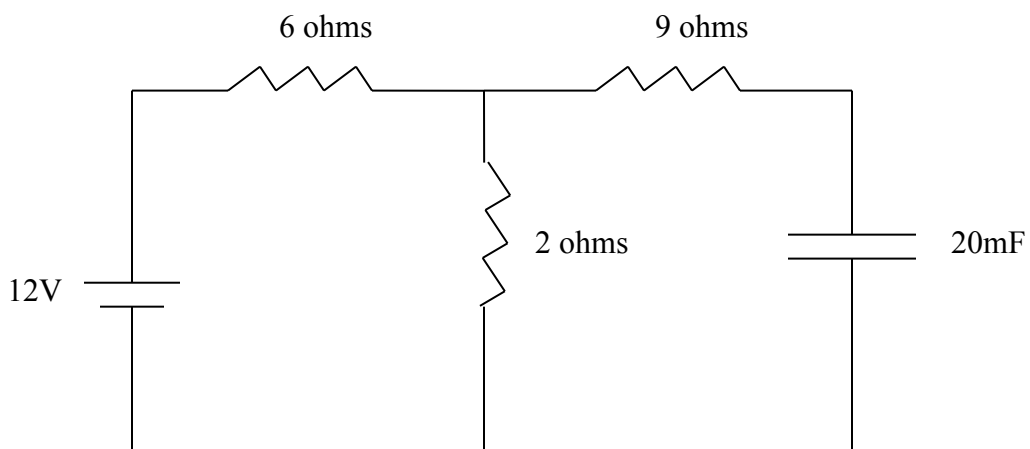
TOPIC

Electricity and Magnetism – Section XI – Question 1

QUESTION

Shown below is a circuit connected to a voltage source of 12V. At steady state, the voltage across the capacitor most nearly is

- (A) 3V
- (B) 12V
- (C) 1.5V
- (D) 11.57V

**CONTRIBUTOR**

Autar Kaw