

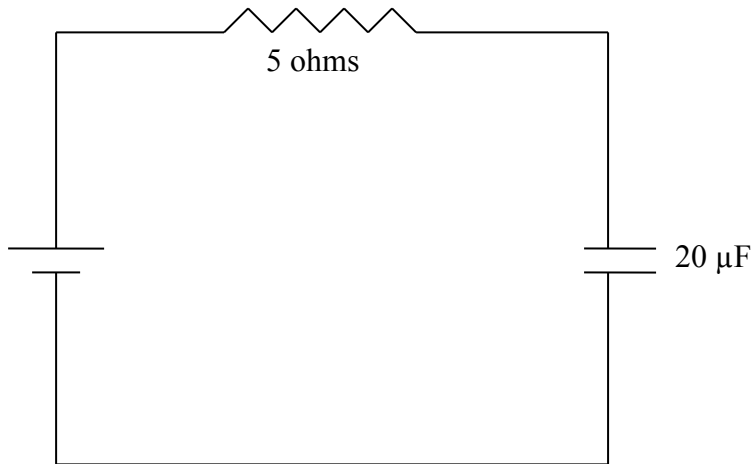
**TOPIC**

Electricity and Magnetism – Section XI – Question 3

**QUESTION**

For the circuit shown, the time constant  $\tau$  in seconds is

- (A)  $1.0 \times 10^{-4}$
- (B)  $5.0 \times 10^{-4}$
- (C)  $4.0 \times 10^{-6}$
- (D)  $2.4 \times 10^{-4}$

**CONTRIBUTOR**

Autar Kaw