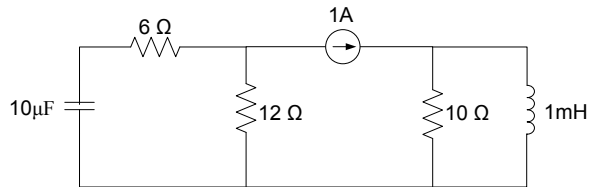


TOPIC

Electricity and Magnetism – Section XI – Question 13

QUESTION

The circuit below has been in the state for a long period. The energy stored in μJoules on the capacitor and inductor, respectively most nearly is



- (A) 0, 0
- (B) 5, 500
- (C) 720, 500
- (D) -720, 500

CONTRIBUTOR

Stelios Ioannou