

TOPIC

Materials – Section IX – Question 9

QUESTION

Eutectic reaction

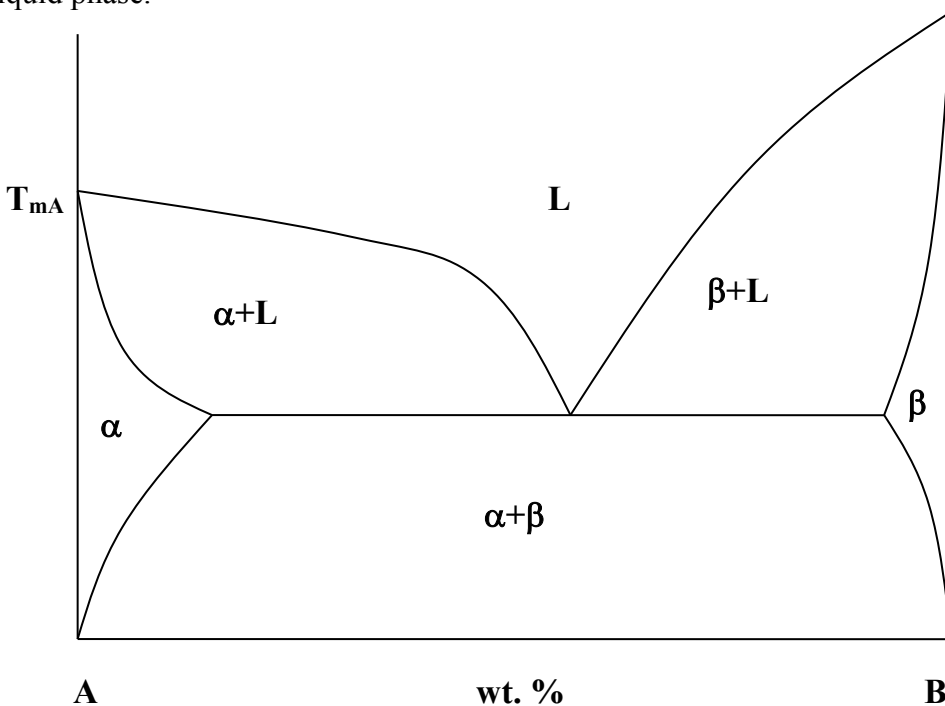
- (A) happens only between the solid phases
- (B) causes an alloy to melt at temperatures lower than individual alloy components melting temperature
- (C) happens only between metals
- (D) is exothermic

HINT

Eutectic reaction is invariant.

SOLUTION

Eutectos in Greek language means “easy melting”. Isothermal eutectic reaction is reversible (invariant), and happens between two (or more) solid phases, which upon heating produce one liquid phase.



ANSWER

(B)

CONTRIBUTOR

Alex Volinsky