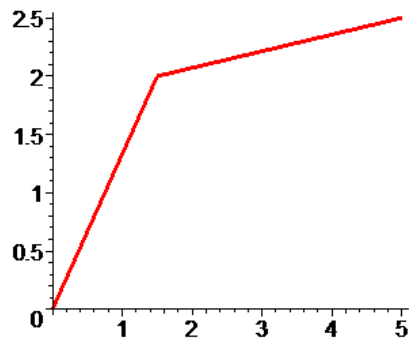


TOPIC

Mathematics – Section I – Question 2

QUESTION

Below is given the graph of a function $f(x)$ for $0 \leq x \leq 5$. The value of $\int_0^5 f(x)dx$ most nearly is



- (A) 6.250
- (B) 9.375
- (C) 12.50
- (D) 25.00

HINT

Use trapezoidal rule with unequal segments for a quick answer as the function is made of piecewise-continuous straight lines.

CONTRIBUTOR

Autar Kaw