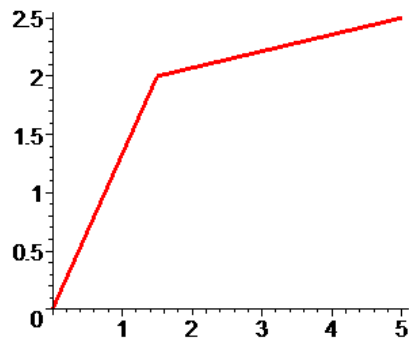


**TOPIC**

Mathematics – Section I – Question 2

**QUESTION**

Below is given the graph of a function  $f(x)$  for  $0 \leq x \leq 5$ . The value of  $\int_0^5 f(x)dx$  most nearly is



- (A) 6.250
- (B) 9.375
- (C) 12.50
- (D) 25.00

**CONTRIBUTOR**

Autar Kaw