

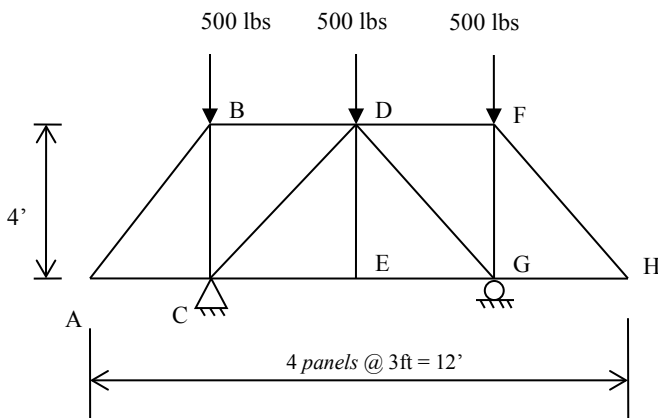
TOPIC

Engineering Mechanics (Statics and Dynamics) – Section VII – Question 6

QUESTION

For the truss shown, the forces in lbs in members DE and DF, respectively, most nearly is

- (A) 500, 0
- (B) 500, 250
- (C) 0, 500
- (D) 0, 0

**HINT**

No calculations are necessary. Can you do the problem by inspection?

CONTRIBUTOR

Karim Nohra