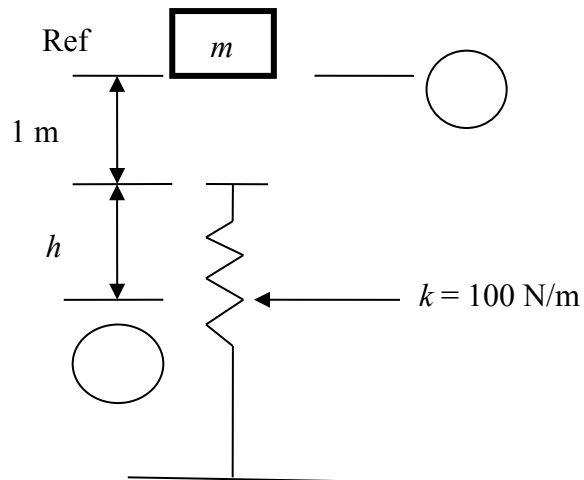


TOPIC

Engineering Mechanics (Statics and Dynamics) – Section VII – Question 18

QUESTION

A 10 kg block is released from rest at Position 1. Which of the following equations represents the reduced form of the conservation of energy necessary to find the maximum compression, h , in the spring at position 2?



- (A) $0 = -98.1h - 98.1 - 50h^2$
- (B) $0 = -98.1h + 50h^2$
- (C) $0 = -98.1h - 98.1 + 50h^2$
- (D) $0 = 98.1h + 98.1 + 50h^2$

CONTRIBUTOR

Karim Nohra