

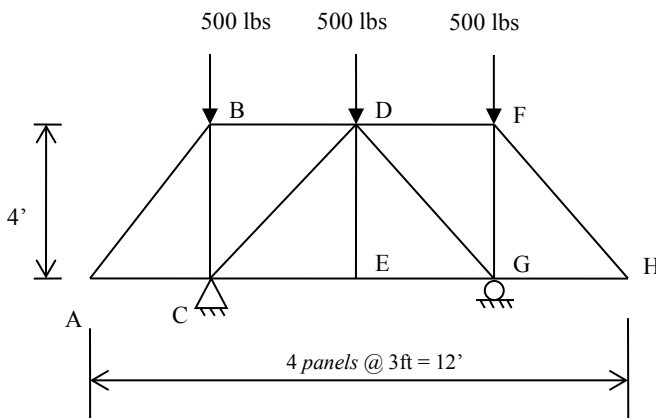
## TOPIC

Engineering Mechanics (Statics and Dynamics) – Section VII – Question 6

## QUESTION

For the truss shown, the forces in lbs in members DE and DF, respectively, most nearly is

- (A) 500, 0
- (B) 500, 250
- (C) 0, 500
- (D) 0, 0



## HINT

No calculations are necessary. Can you do the problem by inspection?

## SOLUTION

No calculations are necessary. By inspection, both are zero.

Common mistake students make is to assume that the force in DE is 500 because of the load at D. Remember each joint must be in equilibrium. If you look at joint E there is nothing balancing the vertical force in DE. Therefore, it must be zero.

## ANSWER

(D)

## CONTRIBUTOR

Karim Nohra